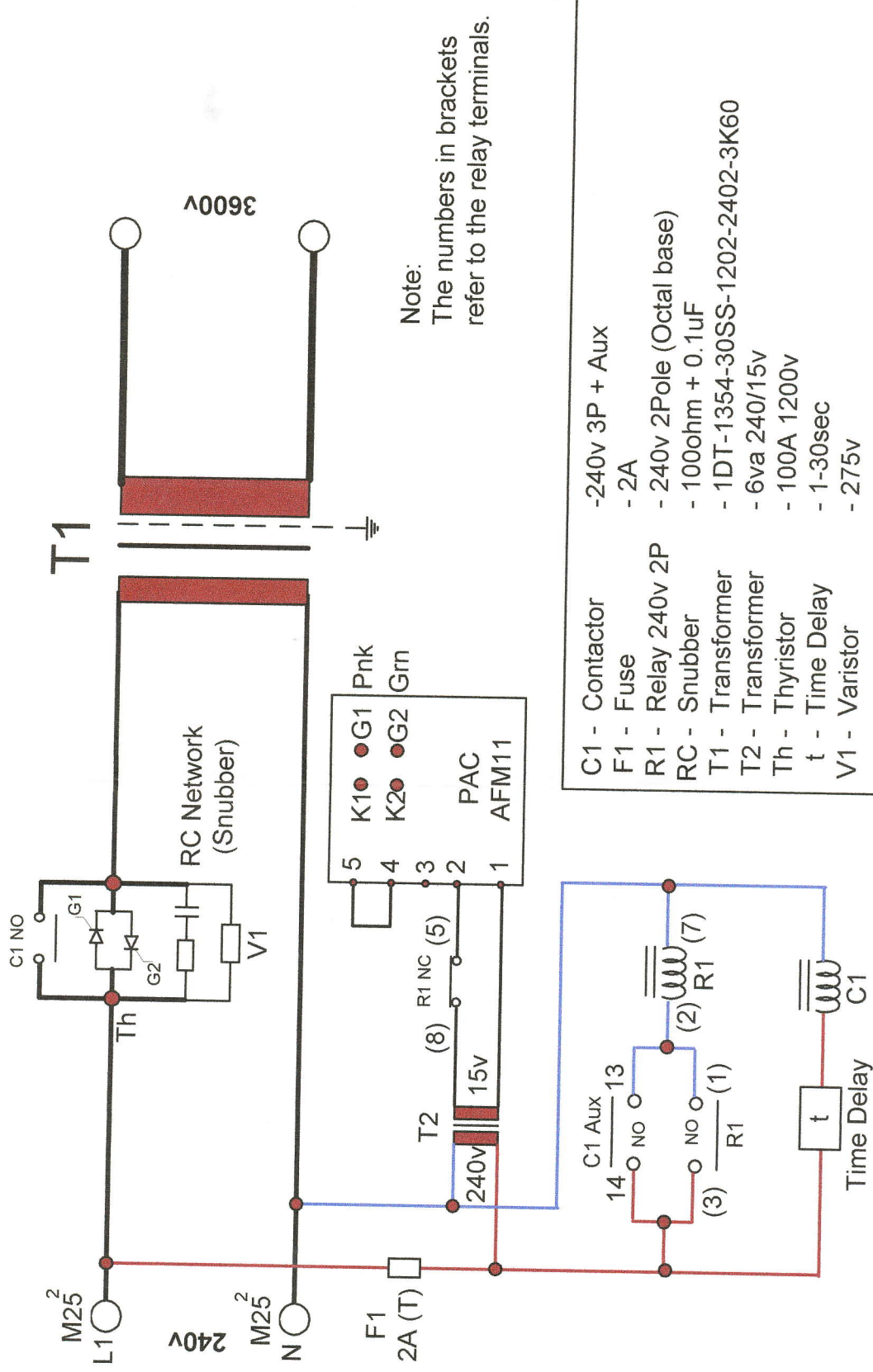


Electronic Soft-Start Unit with Mains contactor and time delay.



Note:
The numbers in brackets refer to the relay terminals.

- C1 - Contactor -240v 3P + Aux - 2A
- F1 - Fuse - 240v 2Pole (Octal base)
- R1 - Relay 240v 2P - 100ohm + 0.1uF
- RC - Snubber - 1DT-1354-30SS-1202-2402-3K60
- T1 - Transformer - 6va 240/15v
- T2 - Transformer - 100A 1200v
- Th - Thyristor - 1-30sec
- t - Time Delay - 275v
- V1 - Varistor

Harrison & Greenwood (Transformers) Ltd
Unit 4 Reflecting Roadstuds, Mill Lane
Boothtown, Halifax HX3 6TR

Rectifier Transformer 12Kva 240/3600v 3.2A RMS
1Ph Double Wound with Electronic Soft-Start and
By-Pass Contactor

Job No. I.O.M.
Date: May 2008
Issue: 1.02